

Cost Cutting
High Performance
Colour Printing



Aficio™ SP C410DN/SP C411DN

Reliable Colour Printing in an Affordable Package



With printing costs amounting to between 1% and 3% of your company's turnover*, cost efficient document generation is crucial. Designed to meet your specific office demands, the Aficio™SP C410_{DN}/SP C411_{DN} keep operation costs low and reliability high. With spectacular colour prints at remarkable speeds, these colour print solutions allow you to stand out. While the SP C410_{DN} gives you that crucial competitive edge at 25 ppm, the SP C411_{DN} takes care of larger print volumes at speeds up to 30 ppm. Making perfect business sense!

* Source: Gartner, 2005

- Powerful colour printing: short warm up and high speeds
- Affordable in-house high quality document creation
- Exceptional paper handling and media support
- Low cost per print
- Advanced security and connectivity features



Your Best Choice for Low Cost Printing

The SP C410_{DN}/SP C411_{DN} offer the most attractive running costs on the market today:

- in-house document creation thanks to high colour and media performance
- minimised maintenance thanks to high duty cycle
- low cost per print due to long yield of consumables
- reduced paper consumption with built-in duplexing

User Oriented Print Solutions

Real life office needs call for solutions that bundle maximum performance, ease of use and cost efficiency, now and in the future. Our advisors analyse your business processes and choose from a complete line up of (colour) print solutions to match your precise demands. You can run company specific applications thanks to unique open architecture while IT managers benefit from seamless connectivity and reduced network loads. As maintenance is minimal, the cost per print is low. In addition, all expenses can be monitored and accounted for using our matching software solutions.



sec **60**



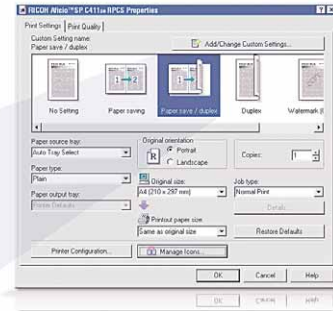
25/30 prints

Spend Less Time on Printing

- short warm up & industry leading first print speed
- continuous output at 25/30 prints per minute & equally fast duplexing
- time saving & network friendly PDF printing
- uninterrupted printing thanks to large paper capacity
- direct photo printing without the need for a PC

Secure your Information

- safeguarded confidential information with data encryption
- advanced authentication & controlled access capabilities

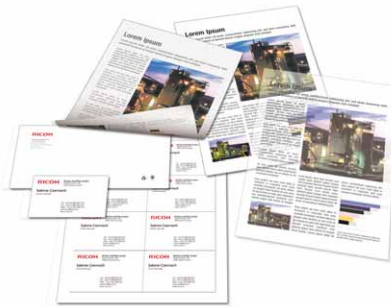


Easy to Use & Maintain

- straightforward maintenance: no need for elaborate technical knowledge
- efficient one click printing with icon based interface (RPCS™)
- easy monitoring & management (e-mail alerts)

Create High Impact Documents

- confidently keep colour printing in-house and create stunning 1,200 dpi presentations, manuals, reports & photo quality imagery
- support for thick paper: up to 216 g/m² from every tray & up to 163 g/m² for duplex
- media variety possibilities: plain paper, recycled paper, transparencies, laser printer labels, envelopes



Connect to your Network

- easy integration into virtually any network environment
- fast print job processing with Gigabit Ethernet
- the ultimate in convenient cable free printing

Easily Upgrade to a Multifunctional System

- designed to connect to the Aficio™ IS200e scanner
- instant access to powerful scanning & standard colour copying capabilities
- scan to e-mail, scan to folder, scan to print



Ricoh's Green Commitment

In line with all Ricoh's products, the Aficio™ SP C410_{DN}/SP C411_{DN} reflect Ricoh's commitment to the environment with the usage of toxic free materials* and minimal ozone and noise emission levels. Other benefits include standard duplex printing, easily recyclable parts and drastically reduced power consumption.

* In compliance with EU RoHS directive (RoHS: Restriction of Hazardous Substances, effective from July 2006).





Aficio™ SP C410DN/SP C411DN

Specifications



GENERAL

| | | |
|-------------------------|--|----------------------|
| Technology: | 4 drums tandem method, laser beam scanning, electro photographic printing and dual component toner development | |
| Continuous print speed: | Black and white/full colour: SP C410DN: 25 prints per minute SP C411DN: 30 prints per minute | |
| Warm up time: | Less than 30 seconds | |
| First print speed: | Black and white: | Less than 10 seconds |
| | Full colour: | Less than 15 seconds |
| Dimensions (W x D x H): | 446 x 589.5 x 487 mm | |
| Weight: | Less than 50 kg | |
| Power source: | 220 - 240 V, 50/60 Hz | |
| Power consumption: | Maximum: | Less than 1.2 kW |
| | Energy saver mode: | Less than 6 W |
| Duty cycle: | 150,000 pages per month | |

CONTROLLER

| | | |
|----------------------------------|--|--|
| Processor: | RM7035C (600 MHz) | |
| Printer language/ resolution: | PCL5c: | 600 x 600 dpi |
| | PCL6, Adobe® PostScript® 3™, RPCS™: | 600 x 600 dpi/1,200 x 600 dpi 1,200 x 1,200 dpi |
| Memory: | Standard: | 256 MB |
| | Hard Disk Drive: | 40 MB |
| | Maximum: | 512 MB |
| Drivers: | PCL5c/PCL6/RPCS™: Windows® 95/98SE/Me/NT4.0/2000/XP/ Server 2003 Adobe® PostScript® 3™: Windows® 95/98SE/Me/NT4.0/2000/XP/ Server 2003 Macintosh 8.6 - 9.2.x (OS X Classic) Macintosh X v10.1/10.2/10.3 or later (native mode), UNIX | |
| Fonts: | PCL5c/PCL6: 35 intelli fonts, 10 true type fonts 1 bitmap font 13 fonts (International Font) Adobe® PostScript® 3™: 136 Adobe® type 1 fonts | |

CONNECTIVITY

| | | |
|---------------------|---|--|
| Network protocol: | TCP/IP, IPX/SPX, AppleTalk | |
| Supported networks: | Windows® 95/98SE/Me/NT4.0/2000/XP/ Server 2003 Novell® NetWare® 3.12/3.2/4.1/4.11/5.0/5.1/6/6.5 UNIX Sun® Solaris 2.6/7/8/9 HP-UX 10.x/11.x/11i v1/11i SCO OpenServer 5.0.6 RedHat® Linux 6.x/7.x/8.x/9.x/Enterprise IBM® AIX v4.3 & 5L v5.1/5.2 Macintosh 8.6 - 9.2.x Macintosh X v10.1/10.2/10.3 or later (native mode), SAP® R/3® 3.x or later | |

| | | |
|---------------------|------------------|---|
| Interface: | Standard: | Ethernet 10 base-T/100 base-TX USB 2.0 |
| | Option: | Bi-directional IEEE 1284 Wireless LAN (IEEE 802.11b) Bluetooth, Gigabit Ethernet, USB Host I/F |
| Network utilities: | Standard: | DeskTopBinder™ Lite SmartDeviceMonitor™ for Admin/Client Printer utility for Macintosh Font Manager 2000 |
| | Option: | Document management utilities & professional software versions |
| Additional feature: | PDF Direct Print | |

PAPER HANDLING

| | | |
|------------------------|---|---|
| Paper input capacity: | Standard: | 1 x 550-sheet paper tray 1 x 100-sheet bypass tray |
| | Maximum: | 1,750 sheets |
| Paper output capacity: | Standard: | 500 sheets face down |
| Paper size: | A4, B5, A5, LT, LG, EXE, HLT, Custom | |
| Paper weight: | 52 - 216 g/m ² | |
| Media: | Plain paper, thick paper, thin paper, recycled paper, transparencies, laser printer labels, envelopes | |

CONSUMABLES

| | | |
|---|----------------|--|
| Toner: | Black/C, M, Y: | 5,000 sheets (regular yield), 15,000 sheets (high yield) ¹ |
| The Aficio™SP C410DN/SP C411DN ship with a starter kit. | | |

OPTIONS

| | |
|-------------------|--|
| Internal options: | 128/256 MB SDRAM DIMM 40 GB Hard Disk Drive Bi-directional IEEE 1284 Wireless LAN (IEEE 802.11b) Bluetooth Gigabit Ethernet USB Host I/F Camera Direct Print Card (PictBridge I/F) User Account Enhance Unit VM Card Data Storage Card |
| External options: | 2 x 550-sheet paper trays |

¹ A4 with 5% coverage.

For availability of models, optional apparatus and software, please consult your local Ricoh supplier.



Adobe PostScript 3



ISO9001: 2000 certified
ISO14001 certified

Ricoh believes in conserving the earth's precious natural resources.

All brand and/or product names are trademarks of their respective owners.

Specifications and external appearance are subject to change without notice. The colour of the actual product may vary from the colour shown in the brochure.

Copyright © 2006 Ricoh Europe B.V. All rights reserved. This brochure, its contents and/or layout may not be modified and/or adapted, copied in part or in whole and/or incorporated into other works without the prior written permission of Ricoh Europe B.V.

RICOH

For more information, please contact:

RICOH EUROPE B.V.
P.O. Box 114, 1180 AC Amstelveen,
The Netherlands
Phone: +31 (0)20 54 74 111
Fax: +31 (0)20 54 74 222

www.ricoh-europe.com